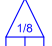




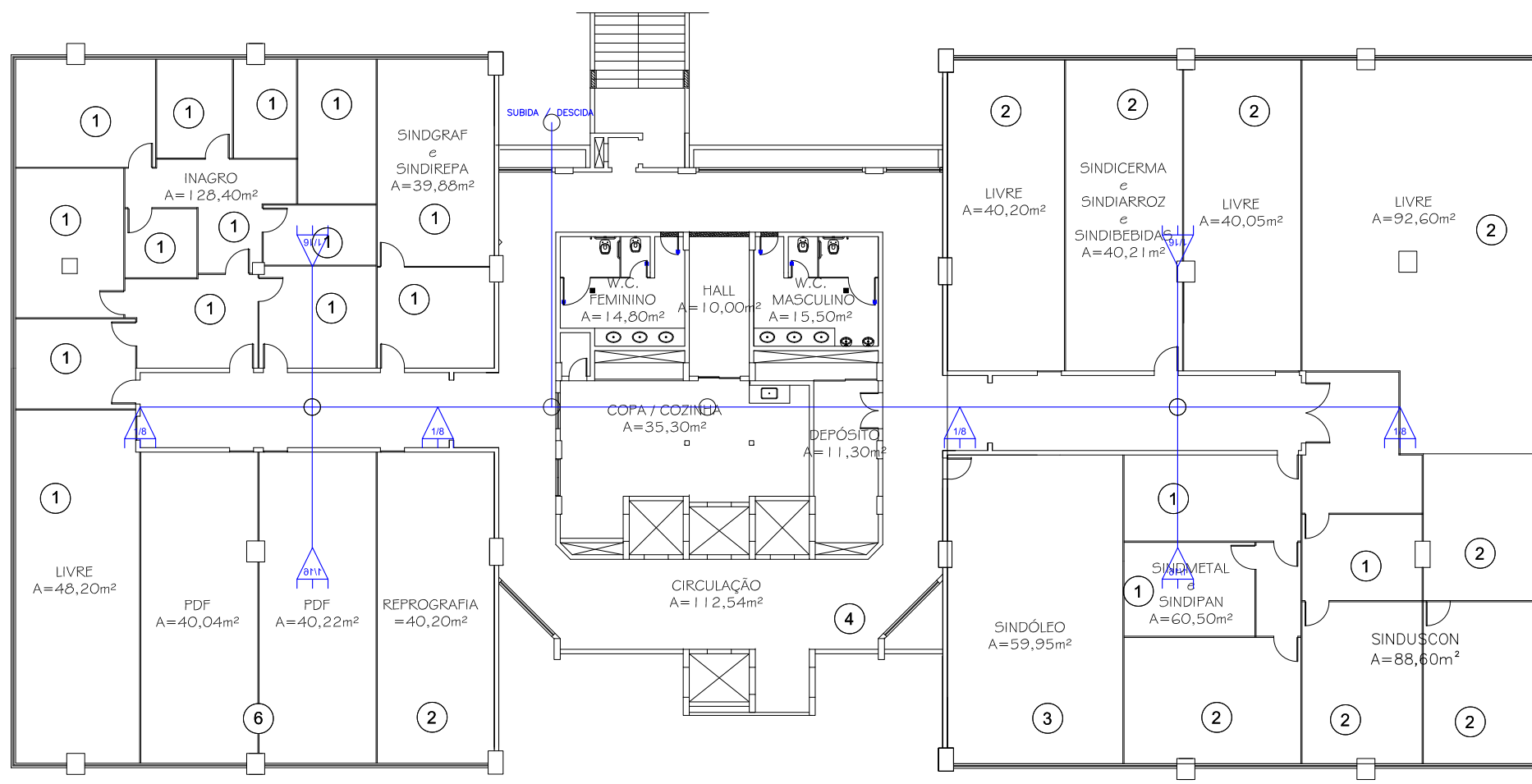
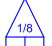




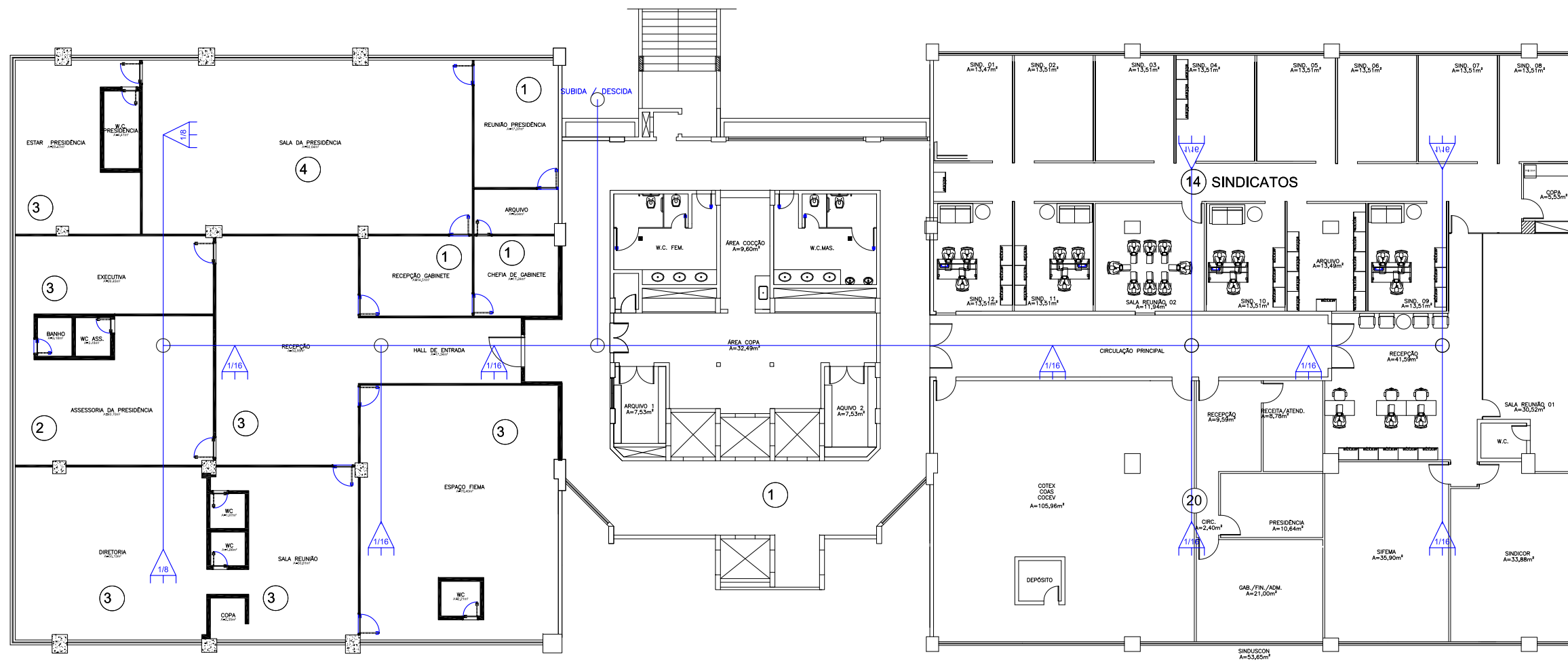


-  CDOI - 8 pontos de atendimento de onu / 25 Unidades
-  CDOI - 16 pontos de atendimento de onu / 26 Unidades
-  Mine-CEO - Caixa de Emenda OPT / 31 Unidades
-  Equipamento de Transmissão de Dados / 1 Unidade
-  Cabo de Fibra OPT - 3 km (Cabo de 12f)



 **3º ANDAR**
AS BUILT FIEMA

-  CDOI - 8 pontos de atendimento de onu / 25 Unidades
-  CDOI - 16 pontos de atendimento de onu / 26 Unidades
-  Mine-CEO - Caixa de Emenda OPT / 31 Unidades
-  OLT Equipamento de Transmissão de Dados / 1 Unidade
-  Cabo de Fibra OPT - 3 km (Cabo de 12f)



O total é de 50Ptos distribuidos neste andar:

4º ANDAR
SINDICATOS FIEMA